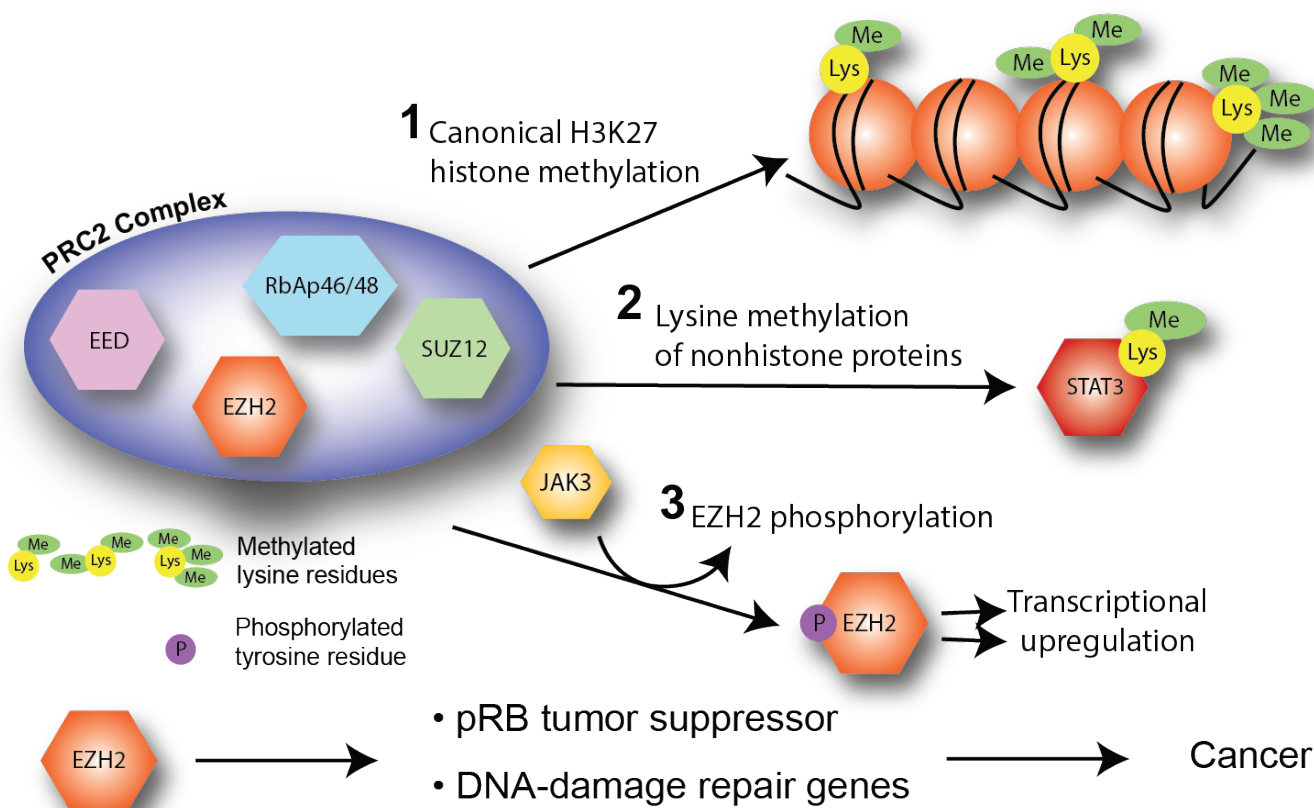


# EZH2 Inhibitors: Key Cancer Therapeutics



Post-translational modifications of the histone proteins play a key role in regulating processes that require access to DNA. Specifically, methylation of lysine 27 on histone 3 (H3K27) is intimately linked with transcriptional repression. Enhancer of zeste homologue 2 (EZH2)—the catalytic subunit of Polycomb repressive complex 2 (PRC2)—mediates transcriptional silencing through trimethylation of histone H3 lysine 27 (H3K27me3). EZH2 dysregulation has been observed in different malignancies and inhibition of its catalytic activity has emerged as a novel therapeutic approach to treat human cancers. In ovarian cancer, EZH2 is commonly overexpressed and therefore potentially serves as an effective therapeutic target. Numerous small-molecule EZH2 inhibitors have been developed against the enzymatic activity of EZH2, and many of them are now in clinical trials. BioVision is proud to offer a number of structurally diverse small molecule EZH2 inhibitors for research with many of them being also offered as ready-to-use “InSolution” format.

Product Name	Cat. No.	Size	CAS No.
AZ-505 ditrifluoroacetate	B1883	1 mg, 5 mg	1035227-44-1
3-Deazaneplanocin A	2060	250 µg, 1 mg	102052-95-9
EZSolution™ 3-Deazaneplanocin A	2409	1 mg	102052-95-9
3-Deazaneplanocin A hydrochloride	2444	250 µg, 1 mg	120964-45-6
EBI-2511	B2433	1 mg, 5 mg	2098546-05-3
EI1	B2270	5 mg, 25 mg	1418308-27-6
EZSolution™ EPZ005687	2375	2 mg	1396772-26-1
EPZ011989	B1221	5 mg, 25 mg	1598383-40-4

Product Name	Cat. No.	Size	CASNo.
EPZ-6438	2383	5 mg, 25 mg	1403254-99-8
EZSolution™EPZ-6438	2428	5 mg	1403254-99-8
EZH2Inhibitor, EPZ005687	2364	2 mg, 10mg	1396772-26-1
GSK126	2282	1 mg, 5 mg	1346574-57-9
EZSolution™GSK126	2366	1 mg	1346574-57-9
GSK343	2281	1 mg, 5 mg	1346704-33-3
EZSolution™GSK343	2365	1 mg	N/A
GSK-503	9538	5 mg, 25 mg	1346572-63-1
MAK-683	B1972	5 mg, 25 mg	1951408-58-4
UNC1999	2449	5 mg, 25 mg	1431612-23-5

Distributed by:

**ImTec**  
**DIAGNOSTICS NV**

Contact us: [info@imtec.be](mailto:info@imtec.be) | 03-2251139